



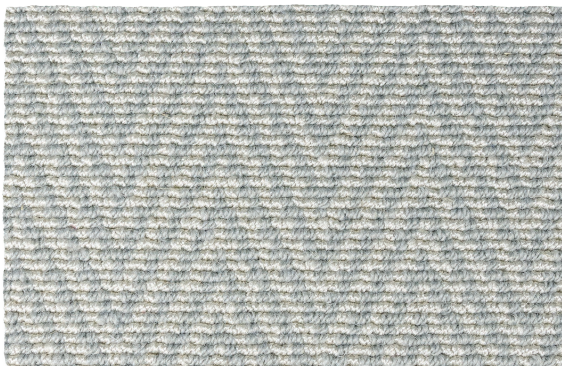
CARLA HERRINGBONE

WILTON WOVEN
CARPET

ROLS
WOOL CARPETS

CARLA HERRINGBONE

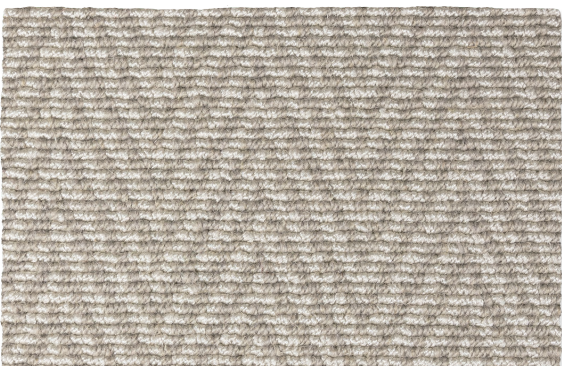
ROLS
WOOL CARPETS



Dove



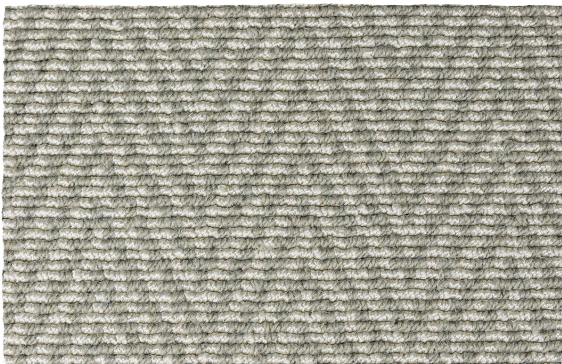
Heavy Metal



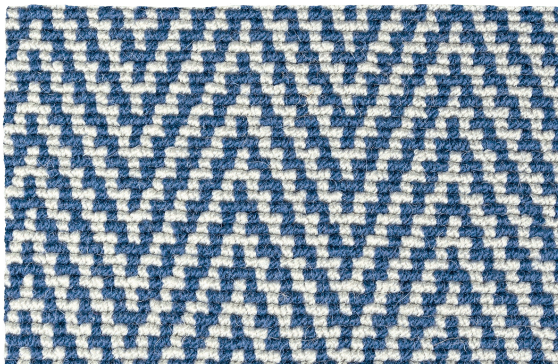
Stone



Alpine



Ash



Denim

TECHNICAL INFORMATION:

MANUFACTURING METHOD
Wilton Woven Carpet

PILE SURFACE
Loop Pile

PILE COMPOSITION
50% Pure New Wool, 50% Econyl

N° TUFTS
± 168.000/m²

PILE WEIGHT
± 1.300 g/m²

TOTAL CARPET WEIGHT
± 2.730 g/m²

PILE HEIGHT
± 5,0 mm

TOTAL CARPET THICKNESS
± 7,0 mm

BACKING
Jute, Cotton & Latex

MANUFACTURING WIDTH
4 m

FIRE CLASSIFICATION
B_fs1

PATTERN REPEAT (L x W)
1,3 x 6 cm

PATTERN MATCH
Straight Match



TOG
1.31



INSTALLATION (WALL-TO-WALL)

Please visit www.moquetasrols.com to download our Quick Fit Guide containing important information relative to the planning & installation of this collection.



CARE & MAINTENANCE

Please visit www.moquetasrols.com to download our Carpet Care and Maintenance booklet containing useful tips on vacuuming, preventative, regular and occasional maintenance solutions and procedures and important guidance for spot cleaning.

ISO 9001
BUREAU VERITAS
Certification



Wool
CHOICE

ECONYL®
Made with 100% Regenerated Nylon

