

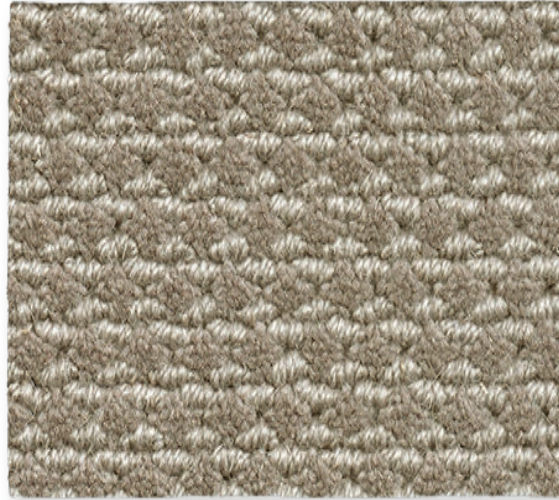


MARIA | WILTON WOVEN
CARPET

ROLS
WOOL CARPETS



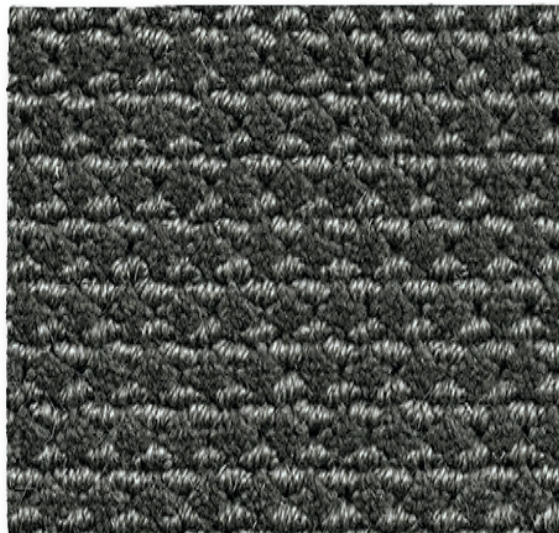
Linen



Stone



Taupe



Smoke

TECHNICAL INFORMATION:

MANUFACTURING METHOD
Wilton Woven Carpet

PILE SURFACE
Cut Pile & Loop Pile

PILE COMPOSITION
100% Pure New Wool

N° TUFTS
± 252.000/m²

PILE WEIGHT
± 1.580 g/m²

TOTAL CARPET WEIGHT
± 3.080 g/m²

PILE HEIGHT
± 7,0 mm Cut
± 6,0 mm Loop

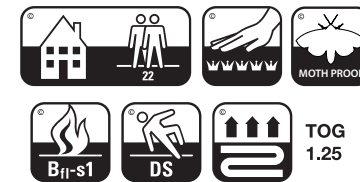
TOTAL CARPET THICKNESS
± 9,0 mm Cut
± 8,0 mm Loop

BACKING
Jute & Cotton

MANUFACTURING WIDTH
4 m

FIRE CLASSIFICATION
B_s1

PATTERN REPEAT (L x W)
2 x 1,3 cm



INSTALLATION (WALL-TO-WALL)

Please visit www.moquetasrols.com to download our Quick Fit Guide containing important information relative to the planning & installation of this collection.



CARE & MAINTENANCE

Please visit www.moquetasrols.com to download our Carpet Care and Maintenance booklet containing useful tips on vacuuming, preventative, regular and occasional maintenance solutions and procedures and important guidance for spot cleaning.

ISO 9001
BUREAU VERITAS
Certification



wool
CHOICE

