

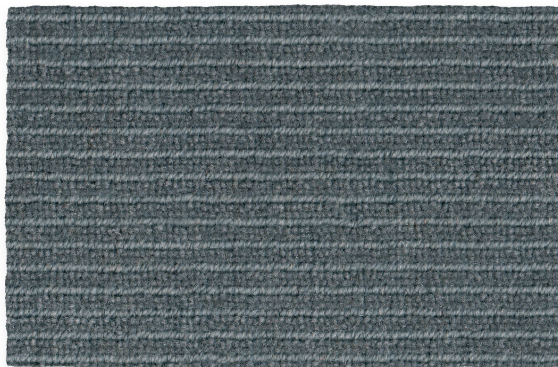


LARA UNI | WILTON WOVEN
CARPET

ROLS
WOOL CARPETS



Dove



Heavy Metal



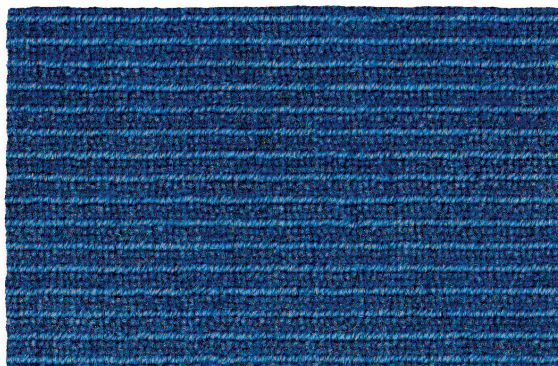
Stone



Alpine



Ash



Denim

TECHNICAL INFORMATION:

MANUFACTURING METHOD
Wilton Woven Carpet

PILE SURFACE
Cut Pile & Loop Pile

PILE COMPOSITION
100% Pure New Wool

N° TUFTS
± 168.000/m²

PILE WEIGHT
± 1.000 g/m²

TOTAL CARPET WEIGHT
± 2.400 g/m²

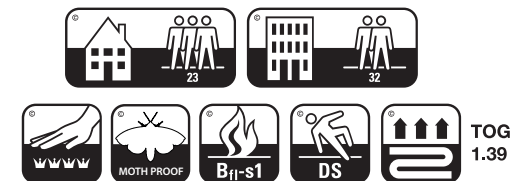
PILE HEIGHT
± 5,5 mm Cut Pile
± 5,0 mm Loop Pile

TOTAL CARPET THICKNESS
± 7,5 mm

BACKING
Jute, Cotton & Latex

MANUFACTURING WIDTH
4 m

FIRE CLASSIFICATION
B_{fl}1



INSTALLATION (WALL-TO-WALL)

Please visit www.moquetasrols.com to download our Quick Fit Guide containing important information relative to the planning & installation of this collection.



CARE & MAINTENANCE

Please visit www.moquetasrols.com to download our Carpet Care and Maintenance booklet containing useful tips on vacuuming, preventative, regular and occasional maintenance solutions and procedures and important guidance for spot cleaning.

