



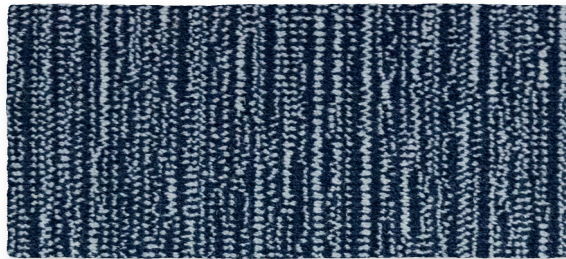
ARIADNA | WILTON WOVEN  
CARPET

ROLS  
WOOL CARPETS

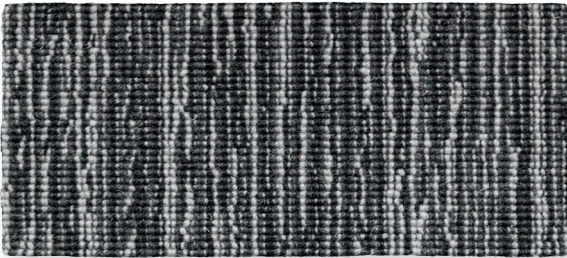




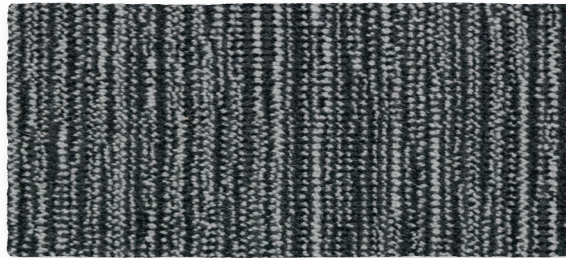
Marino-L



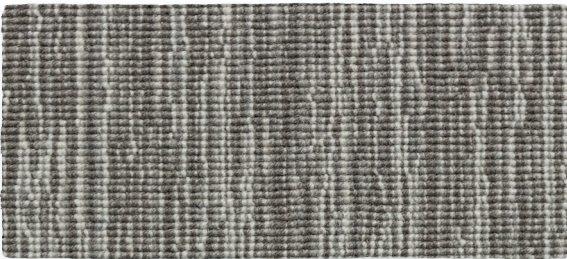
Marino-C



Plomo-L



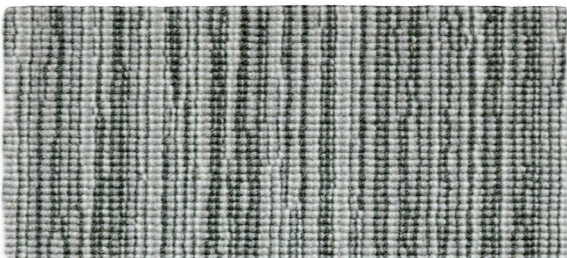
Plomo-C



Natural-L



Natural-C



Silver-L



Silver-C

## TECHNICAL INFORMATION:

MANUFACTURING METHOD  
Wilton Woven Carpet

PILE SURFACE  
Cut Pile or Loop Pile

PILE COMPOSITION  
100% Pure New Wool

N° TUFTS  
± 252.000/m<sup>2</sup>

PILE WEIGHT  
± 1.250 g/m<sup>2</sup>

TOTAL CARPET WEIGHT  
± 3.190 g/m<sup>2</sup>

PILE HEIGHT  
± 6,0 mm

TOTAL CARPET THICKNESS  
± 8,0 mm

BACKING  
Jute & Cotton

MANUFACTURING WIDTH  
4 m

FIRE CLASSIFICATION  
B<sub>fl</sub>s1



### INSTALLATION (WALL-TO-WALL)

Please visit [www.moquetasrols.com](http://www.moquetasrols.com) to download our Quick Fit Guide containing important information relative to the planning & installation of this collection.



### CARE & MAINTENANCE

Please visit [www.moquetasrols.com](http://www.moquetasrols.com) to download our Carpet Care and Maintenance booklet containing useful tips on vacuuming, preventative, regular and occasional maintenance solutions and procedures and important guidance for spot cleaning.

